

NCECD100W

Instruction Manual



Made In PRC



CD Player

CD / MULTIMEDIA PLAYER,
RECEIVER + BLUETOOTH

Installation..... 02-03

Additional information..... 04

General operations..... 05-08

Radio operations..... 09

Aux Audio Inputs..... 11

CD/SD/MMC/USB Operations..... 12-14

BLUETOOTH..... 15

Mp3 WMA overview..... 16

Remote control layout..... 17-18

Specification..... 19

Before playing discs..... 20

Trouble shooting..... 21

Notes..... 22

Before going through the check list, check wiring connection. If any of the problems persist after checklist has been made, consult your nearest service dealer

Symptom	Causes	Solution
No Power	The car ignition key not been switched on	If the power supply is properly connected to the car accessory terminal, switch the ignition key to ACC
	The fuse is blown	Replace a new fuse
CD Cannot Be Loaded or Ejected	A CD is already inside the player slot	Remove the CD from the player and insert the new one
	Inserting the CD in reverse direction	Insert the CD with the label facing up
	The CD is extremely dirty or defected	Clean the CD or try to play a new one
	Temperature inside the car is too high	Cool off until the ambient temperature return to normal
	Condensation	Leave the player off for an hour or so and try again
No Sound	Volume is at minimum	Adjust volume to desired level
	Wiring is not properly connected	Check wiring connection
Sound Skipping	The installation angle is more than 30°	Adjust the installation angle to less than 30°
	CD is extremely dirty or Defected	Clean the CD or try to play a new one
The Operation Keys Do Not Work	The built-in microcomputer is not operating properly due to Interference	Press the RESET button or reinstall the front panel properly
The Radio or Automatic Selection Does Not Work	The antenna cable is not connected correctly	Connect the antenna cable correctly
	The signals are too weak	Select the station manually

PRECAUTIONS

Choose the mounting location where the unit will not interfere with the normal driving function of the driver.

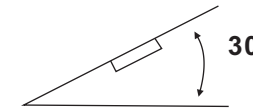
Before finally installing the unit, connect the wiring temporarily and make sure it is all connected up properly and the unit and the system work properly.

Use only the parts included with the unit to ensure proper installation. The use of unauthorized parts can cause malfunctions.

Consult with your nearest dealer if installation requires the drilling of holes or other modifications of the vehicle.

Install the unit where it does not get in the driver's way and cannot injure the passenger if there is a sudden stop. Like an emergency stop.

If installation angle exceeds 30° from horizontal, the unit might not give its optimum performance.



Avoid installing the unit where it would be subject to high temperature, such as from direct sunlight, or from hot air, from the heater, or where it would be subject to dust, dirt or excessive vibration. Do not expose this equipment to rain or moisture.

DIN FRONT-MOUNT (Method A)

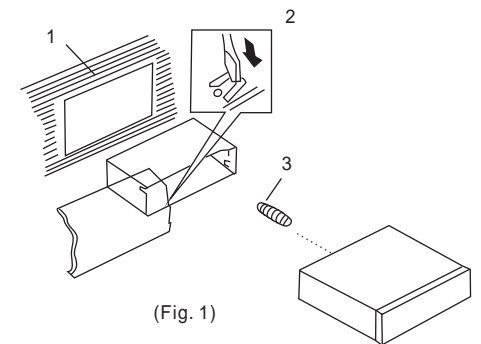
Installing the unit

1. Dashboard

2. Holder

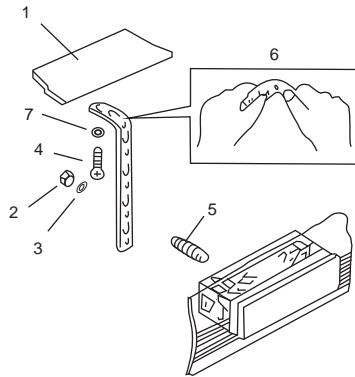
After inserting the holder into the dashboard, select the appropriate tab according to the thickness of the dashboard material and bend them inwards to secure the holder in place.

3. Screw



(Fig. 1)

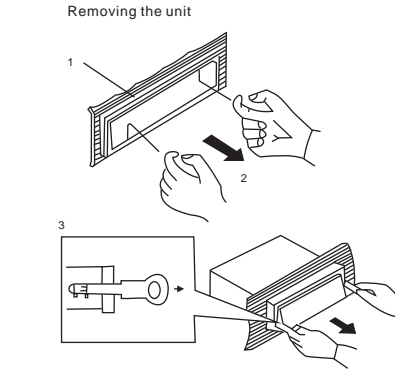
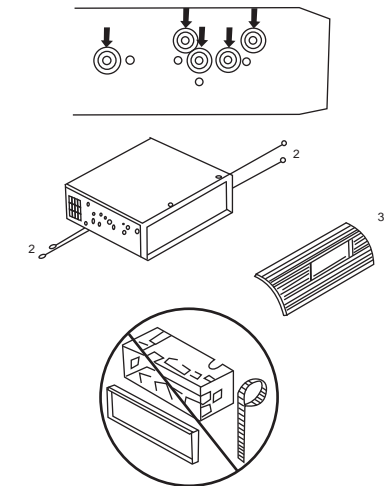
INSTALLATION



(Fig.2)

1. Dashboard
2. Nut (5mm)
3. Spring Washer
4. Screw (5 x 25mm)
5. Screw
6. Strap
7. Plain Washer

Be sure to use the strap to secure the back of the unit in place. The strap can be bent by hand to the desired angle.



(Fig.3)

1. Frame
2. Insert fingers into the groove in the front of frame and pull out to remove the frame. (When reattaching the frame, point the side with a groove downwards and attach it.)
3. Lever

Insert the levers supplied with the unit into the grooves at both sides of the unit and shown in figure until they click. Pulling the levers makes possible to remove the unit from the dashboard.

Fastening the unit to the factory radio mounting bracket:

1. Select a position where the screw holes of the bracket and the screw holes of the main unit become aligned (are fitted), and tighten the screws at 2 places on each side. Use either truss screws (5 x 5mm) or flush surface screws (4 x 5mm)
2. Screw
3. Dashboard or Console

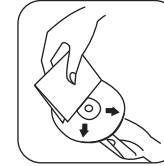
DIN REAR-MOUNT (Method B)

Installation using the screw holes on the sides of the unit

BEFORE PLAYING DISCS

Cleaning the CD

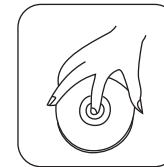
Before playing a CD, wipe it off with a clean, dust-free cleaning cloth. Wipe the disc in the direction of the arrow.



Always insert the CD with the label side facing upwards. If the CD is inserted with the printed side facing downwards, the device may be damaged.



Note: If there is already a CD in the CD slot, do not try to insert a second CD. This may damage the device. Always hold CDs by the edge. In order to keep the CD clean do not touch the surface. Pull out the CD as follows.



Do not attach any sticker or adhesive tape on the CD. Do not expose the CD to direct sunlight or sources of heating. Do not leave CDs in a car if it parked in direct sunlight as that will lead to a considerable rise in the temperature inside the car.

Note: Do not use any solvents such as petrol or thinning agents. Commercially available cleaning substances of antistatic spray will damage the device.

SPECIFICATIONS

General

Power Supply Requirements:	DC 14.4V [±] ---, Negative Ground
Load Impedance:	4 ohms
Maximum Output Power:	25W x 4(CH)

Chassis Dimensions:	178 x 163x 50mm (W x D x H)
Current Drain:	10A

Tone Controls

Bass (at 100Hz):	+10dB / -10dB
Treble (at 10K):	+10dB / -10dB

CD Player

Signal to Noise Ratio:	More than 60dB
Channel Separation:	More than 60dB
Frequency Response:	20Hz - 20KHz

FM Radio

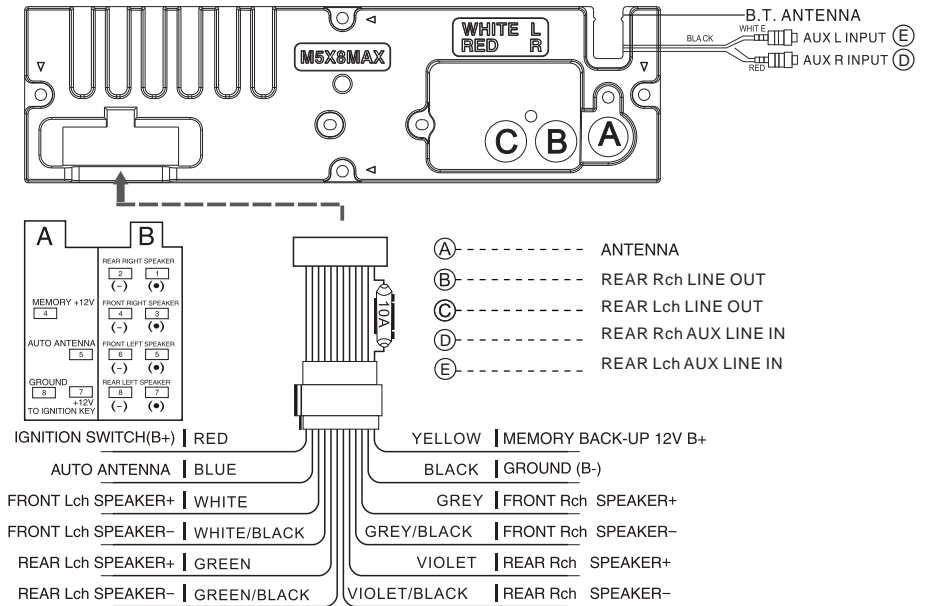
Frequency Coverage (MHz):	87.5 - 108MHz
IF :	10.7MHz
Sensitivity (S/N-30dB):	12dBu
Stereo Separation:	>30dB

AM Radio

Frequency Coverage (KHz):	522 - 1620KHz
IF :	450KHz
Sensitivity (S/N-20dB):	<42dBu

Remarks:
Specifications subject to change without notice

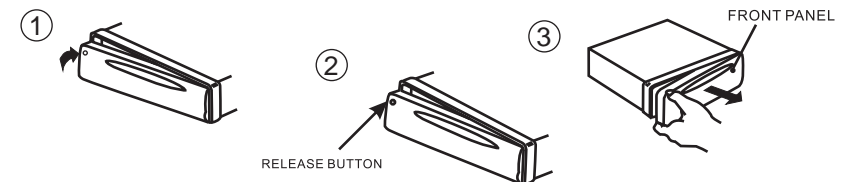
ADDITIONAL INFORMATION



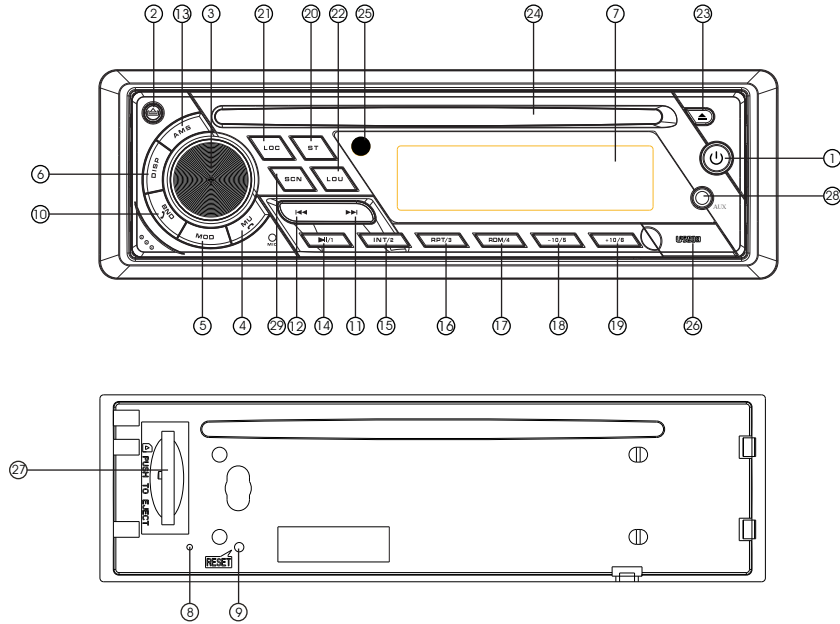
HOW TO INSTALL AND REMOVE THE FRONT PANEL

INSTALLING THE FRONT PANEL

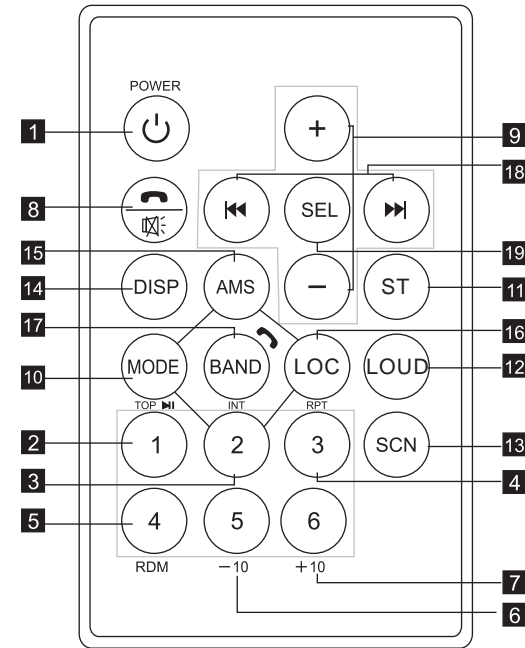
To install the front panel, insert the panel into the housing and make sure the panel is properly installed, otherwise, abnormalities occurs on the display or some keys will not function properly



FRONT PANEL LAYOUT



- | | |
|------------------------------------|------------------------------|
| 1. Power Button | 15. Intro & Preset Button 2 |
| 2. Release Button | 16. Repeat & Preset Button 3 |
| 3. Volume/ Sel Button | 17. Random & Preset Button 4 |
| 4. Mute/ Button | 18. Preset Button 5 |
| 5. Mode switch | 19. Preset Button 6 |
| 6. Display Button | 20. ST/MO Button |
| 7. LCD Display | 21. LOC/DX Button |
| 8. Flashing LED | 22. Loudness Button |
| 9. Reset Button | 23. Eject Button |
| 10. Band/ switch/ID3 select | 24. CD Slot |
| 11. Tune Seek&Track forward Button | 25. Remote Control Sensor |
| 12. Tune Seek&Track reverse Button | 26. USB Socket |
| 13. Automatically memory storing | 27. SD/MMC Slot |
| 14. Play / Pause & Preset Button 1 | 28. AUX IN JACK |
| | 29. SCN Button |



- | | |
|---------------------------------|---------------------------------------|
| 1 Power Button | 10 Mode Switch |
| 2 Pause/play/ Preset Button1 | 11 ST/MO Button |
| 3 Intro/Preset Button2 | 12 Loudness Button |
| 4 Repeat Playing/Preset Button3 | 13 Scan Button |
| 5 Random/Preset Button4 | 14 Display Button |
| 6 Preset Button5 | 15 APS/AMS Button |
| 7 Preset Button6 | 16 LOC/DX Button |
| 8 Mute/ Button | 17 Band/ Switch |
| 9 Volume Control | 18 Tuning/Selecting Tracks/ F.F / F.R |
| | 19 Select Button |

6. How to delete stored phone number?

The unit can store ten numbers of missed, rejected and ANS separately, and the first number will automatically be deleted when the 11th number calls.

7. How to use “RECEIVED” “MISSED” “REJECTED” “MANU ANS/AUTO ANS” Functions.

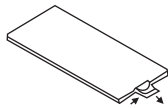
Press “MUTE” for 3 seconds to enter into “RECEIVED” “MISSED” “REJECTED” “MANU ANS/AUTO ANS”. Turn VOL button for choosing the telephone number.

PLEASE NOTE: Some incoming phone calls maybe not be able to be answered by the head unit controls when there is No Caller ID or the incoming phone number is stored in the phone contacts under more than 1 contact card.

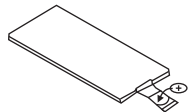
Replacing the Battery

When the operational range of the remote control becomes short or non functions while operating. Replace with a new CR2025 battery. Make sure of the battery polarity before replacement.

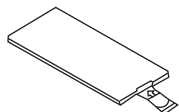
1. Pull out Battery Holder while pressing the stopper



2. Put the button type battery with the (+) mark facing upward into the Battery Holder.



3. Insert the Battery Holder into the Remote control



GENERAL OPERATIONS

Power ON/OFF

Press any button to turn the unit on. Press and hold POWER button to turn off the unit.

Note: After the unit is off, the volume level and radio current settings will be memorized, and when you turn the unit on it will resume the stored status, which you set.

FRONT PANEL RELEASE

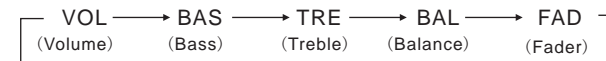
Press REL button (2) to detach the removable front panel

SOUND ADJUSTMENT

Turn on (3) can adjust the desired volume quality.

A). Press SEL button (3) will change in the following order.

Option:



Volume control/select

Rotating this knob, you can adjust VOL/BASS/TREB/BAL/FAD. To select the functions, press the VOL knob shortly until the desired functions are shown on the display.

Increase or decrease the volume by turn the VOL knob right or left. These buttons can be used to adjust the BASS, TREBLE, BALANCE and FADER.

BASS

Press VOL/SEL button(3) one time. Adjust bass level by using VOL/SEL(3)Knob.

TREBLE

Press VOL/SEL button(3) two times. Adjust treble level by using VOL/SEL(3) Knob

BALANCE

Press VOL/SEL button(3) three times. Adjust sound balance between left and right speakers by using VOL/SEL(3)Knob.

FADER

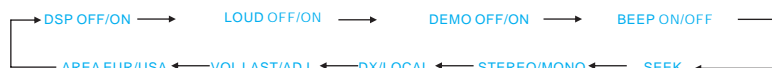
Press SEL button(3) four times. Adjust sound balance between front and rear speakers by using VOL/SEL(3)Knob.

MUTE

Press MUTE button (4) to mute the sound. Press the mute button again to unmute the sound and return to the previous volume level.

OTHER ADJUSTMENTS

Press VOL/SEL button(3) for several seconds, it is activated as cyclical mode of following functions for user's selection.



DSP Mode OFF/ON

Pressing and holding this button will go to different modes: Turn the volume knob to choose Flat, Classic, Pop or Rock. Press the function button to select your favourite DSP mode.

LOUD Function OFF/ON

Turn the volume knob to either turn the Loudness On or Off. (This feature used for in store demos). Press the volume button to select your choice.

DEMO Function OFF/ON

Turn the volume knob to either turn the Demo function On or Off. (This feature used for in store demos). Press the volume button to select your choice.

BEEP Function OFF/ON

Turn the volume knob to either turn the Beep function On or Off. Press the volume button to select your choice.

SEEK Mode

Turn the volume knob to either turn the Seek mode. Press the volume button to select your choice.

STEREO/MONO Mode

Turn the volume knob to either select between Stereo or Mono audio. Press the volume button to select your choice.

DX/LOCAL

Turn the volume knob to either turn the DX/Local modes. Press the volume button to select your choice.

VOL LAST/ADJ

Turn the volume knob to set the volume to either to last volume level or set to a custom volume level.

AREA EUR/USA

Turn the volume knob to select either European or USA radio frequencies. Only change this if you are using the unit in a different country.

1. Pairing connection.

Turn on this unit and place your mobile near the unit, activate your mobile bluetooth function. Soon the phone will find the new bluetooth device "CAR AUDIO". Input the pairing password "8888" and click OK. The phone will confirm if the pairing is successful. When the pairing connection is successful, the LCD will display BT ON, and the bluetooth logo "♫" will stop blinking. Then you may perform the bluetooth operation.

REMARK: The headunit bluetooth system supports "HSP" "HFP" "A2DP" and AVRCP bluetooth profiles. Check your mobile phone for its bluetooth capabilities.

2. Handsfree phone service

If your mobile phone is paired with the unit, you can dial calls out through your mobile phone. If there is a incoming call the head unit will switch to bluetooth mode automatically and the incoming call phone number will display on the LCD screen.

- Press the "BAND" button shortly to accept the call. Then you can talk with the other party through the microphone on the front of the panel.
- Press "MUTE" button shortly to reject the call when calling comes in.
- Press "MUTE" button shortly to hang up after you finish talking.

3. Advance Audio distributing profile(A2DP) playing.

(If the mobile phone has the A2DP and AVRCP bluetooth functions) After paired successfully, press the MODE button repeatedly to switch to BT AUDIO mode.

- Press button " " and " " in the panel can select the music track.
- Press " " button shortly to pause the music.
- Long press "BAND"(mode) to temporarily disconnect the bluetooth.
- Long press "BAND"(mode) button again to reconnect the bluetooth.

4. Interrupt bluetooth connection/reconnection.

Short press the "BAND" button to interrupt the bluetooth connection when you are taking a call and the call then is handled by the mobile phone. Press "BAND" button again to reconnect.

*NOTE: Different mobile phones have different responses.
We do not guarantee all the operations of connectable devices.*

5. Phone number book.

This bluetooth system can automatically store incoming call numbers, up to 10 phone numbers.

- Long press "MUTE"(mode) button to enter the phone number book and press VOL button to look up the phone number.
- Press "BAND" button once can call out you desired phone number.

*CONTINUE OVER

- MP3 is short for MPEG Audio Layer 3 and refers to an audio compression technology standard.
- This product allows playback of MP3 files on CD-ROM, CD-R or CD-RW discs.
- The unit can read MP3 files written in the format compliant with ISO 9660. However it does not support the MP3 data written by the method of packet write.
- The unit can not read an MP3 file that has a file extension other than “.mp3”
- If you play a non- MP3 file that has the “.mp3” extension, you may hear some noise.
- In this manual, we refer to what are called “MP3 file” and “ folder” in PC terminology as “ track ” and “ album ”, respectively.
- Maximum number of directory level is 8, including the root directory. Maximum number of files and folders per disc is 256.
- The unit may not play tracks in the order of Track numbers.
- The unit plays only the audio tracks if a disc contains both audio tracks and MP3 files.
- When playing a disc of 8 kbps or “VBR”, the elapsed playing time in the display window will not be correct and also the intro play may not function properly. “ VBR ”: Variable Bit Rate.
- The unit supports the playback of WMA files. The playback of ID3 tags for WMA format is not guaranteed, it depends on versions and availability of Cyrillic alphabet.
- WMA (Windows Media Audio) -music data compression format, created by Microsoft Corporation. This format uses coding algorithm for compression of initial audio-record, greatly decreasing the file size, but, saving the good sound quality even when the bit rate is low (for example, 64 Kbit/s).
- Remember that the unit may not play the tracks in order they are written on disc.

Notes on creating your own CD-R or CD-RW containing MP3 files:

- To enjoy high quality sound, we recommend converting to MP3 files with a sampling frequency of 44.1 kHz and a fixed bit rate of 128 kbps.
- DO NOT store more than 256 MP3 files per disc.
- For ISO 9660 - compliant format, the maximum allowable depth of nested folders is 8, including the root directory (folder).
- When CD-R disc is used, playback is possible only for discs, which have been finalized.
- Make sure that when MP3 CD-R or CD-RW is burned that it is formatted as a data disc and NOT as an audio disc.
- You should not write non-MP3 files or unneeded folders along with MP3 files on the disc otherwise it takes a long time until the unit starts to play MP3 files.
- With some CD-R or CD-RW media, data may not be properly written depending on its manufacturing quality. In this case, data may not be reproduced correctly. High quality CD-R or CD-RW disc is recommended.
- Up to 16 characters are displayed for the name of an Album or a Track. ID3TAG version 1.x is required.
- Note that the unit may not play Tracks in the order that you wrote them to the disc.

SELECT MODE

Press the MODE button (5) to select different modes:

- Tuner (radio)
- CD (MP3 CD)
 - to go to this mode must be have a CD in.
- USB
 - to go to this mode USB device must be connected.
- Memory Card
 - to go to this mode must be have a Memory Card in.
- AUX input
- Bluetooth

DISPLAY

Press DISP button (6) to change the display mode as follows:

- Time is displayed for 5sec when DISP key is pressed, and it returns to its previous display (Folder, File name...) unless DISP key is pressed again.
- 3) From the clock mode, when DISP Key is pressed for longer than 1sec, clock mode switches to clock Adjusting mode and the clock display begins flashing. At this time the clock can be changed by rotating the volume knob (3). Rotate clockwise to change the hour, and rotate counter clockwise to change the minutes. To set the clock push the DISP button.

LIQUID CRYSTAL DISPLAY

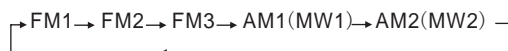
Display for showing current status of head unit.

FLASHING LED

When the headunit is turned off, and the front panel is removed from main unit, the LED light (8) will flash.

BAND SELECTION

At tuner mode, press BAND button (10) to select the desired band. The reception band will change in the following order:



STATION SELECTION

Press TUNE/SEEK/TRACK FORWARD button (11) or TUNE/SEEK/TRACK REVERSE button (12) shortly for manual tuning function.

Press for several seconds the automatic tuning mode (SEEK mode) is selected.

AUTOMATICALLY MEMORY STORING & PROGRAM SCANNING

- Automatically Memory Storing

Press AMS(MP3) button (13) for several seconds, the radio searches from the current frequency and checks the signal strength until one cycle search is finished.

And then 6 strongest stations are stored into the corresponding preset number button.

- Program Scanning

Press AMS(MP3) button (13) shortly to scan preset station. When the field strength level is more than the threshold level of stop level, the radio is holding at that preset number for several seconds with releasing mute, then searches again.

STATION STORING

Press preset button (14~19)

1) RADIO MODE.

M1 ~ M6

- PRESET MEMORY is loaded when key is pressed for less than 1 second.

- PRESET MEMORY is saved when key is pressed for longer than 1 sec.

2) CD/ MP3 / FLASH MP3

PLAY / PAUSE

Press preset button (14) is activated. During a PAUSE, DISC INDICATOR flashes.

TOP - First song will play when Top key is pressed for longer than 0.5sec during play.

INT

Press preset button (15): During INTRO ON, INT indicator comes on and begins playing the first 10sec of each song, until the last song is played. It begins playing the entire track from where INT started

Selection of MP3/WMA files

1. Searching Time:

- Press AMS one time, then searching time is activated.
- Turn VOL knob to right or left, select the time you want.
- Press VOL knob, then the select time of the song will play

2. Searching Track:

- Press AMS twice, then searching track is activated.
- Turn VOL knob to right or left, select the track you want.
- Press VOL knob, the song you selected will start.

3. Searching File Name:

- Press AMS 3 times, then file search is activated.
- Press VOL knob, then the first directory is displayed.
- Turn VOL knob to right or left, you can select the directory you want.
- Press VOL knob again, then the directory is fixed and the first file name is displayed.
- Turn VOL knob to right or left, you can select the file you want.
- Press VOL knob, then the song you selected will start.

4. Searching Character:

- Press AMS 4 times, then character search mode is activated.
- Press VOL knob, then * character is displayed.
- Turn VOL knob to right or left, you can select the letter you want.
- Press VOL knob longer than 2 sec.
- The song which has same character you selected is displayed.
- Turn VOL knob to right or left, you can select the song you want.
- Press VOL knob, then the song you selected will start.

Note:

USB format supports 2.0.

Capacity: up to 4 GB.

SD cards brands: Cannon, Fuji film, Palm, Motorola, Microsoft, IBM, HP, Compaq, Sharp, Samsung, etc.

Capacity: up to 4 GB.

MMC cards brands: Ericsson, Nokia, Motorola, HP, Palm, Sanyo, Microsystems, etc.

Capacity: up to 4 GB.

Note: Because of the great variety of products with SD and MMC card slots and their sometimes quite manufacturer-specific functions the producer can neither guarantee that all devices will be recognized nor that all operating options that are possible in theory will actually work.

ID 3 Tag information

This unit supports ID3 tag ver2.0. If an MP3/WMA file has ID3 Tag information, it will be displayed on the LCD. If there is no ID3 Tag information, nothing will be shown on LCD. The ID3 Tag information may include File, Folder, Music, Album or Artist data.

NEXT/PREVIOUS

Press NEXT/PREVIOUS buttons to choose next or previous track. Press longer than 1 sec., to choose forward playback or backward playback.

PLAY/PAUSE

Press PAUSE button to pause the playback, press one more time to resume the normal playback.

INTRO (Preview all Tracks)

When this button is pressed, "INT ON" indication is displayed and the first several seconds of each track of the disc is played. Press again to stop intro and listen to track.

REPEAT

When RPT button is pressed, "PT ON" indication is displayed and playback of the selected track will be continually repeated until the track repeat mode is cancelled by pressing RPT button again.

RANDOM

When RDM button is pressed, "RDM ON" indication is displayed and each track of the disc is played in random instead of normal order. To cancel RANDOM mode, press RDM button again.

TRACK DOWN/UP SELECT (In case of MP3/WMA files)

-10/5 button: 10 Track down

+10/6 button: 10 Track up

MO/ST SELECTOR

Press ST(20) button to select MONO or STEREO mode.

When "ST" appears in the LCD display. During the player mode, press the button to switch left speaker/right speaker/stereo.

LOC/DX SELECTOR

Press LOC(21) button to select strong or weak station reception. It is set to LOC mode when LOC(21) button is first pressed. "LOC" appears and only local station is available. It is switched to DX mode when LOC(21) button is pressed again. Both distance and local stations can be received.

LOUDNESS ON/OFF

Press LOU(22) button to increase the low frequency. This can improve the sensitivity of your ears. And "LOUD" appears in the LCD when the loudness mode is activated.

SCAN

Press scan button(29) to search radio station. When a station signal strength level more than the level to stop. The radio will playing the station for 5 seconds and the frequency blinking on the LCD at the same time.

Press and hold scan button(29) more than 3 seconds to select the station which you desired. The radio will start play the station.

AREA USA/EUR SETUP

In Radio mode. Press SEL button for several seconds. LCD will be show from DSP OFF/ON → AREA USA/EUR. At AREA USA/EUR. You can use VOL +/- to select the AREA frequency.

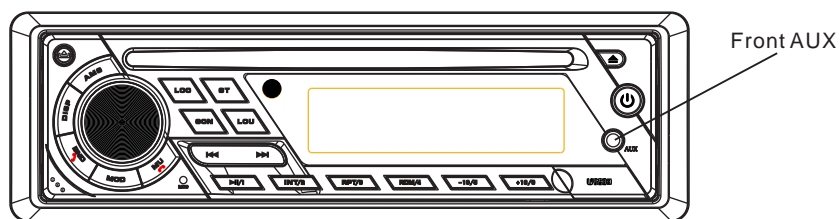
(Only use this feature if using this unit in a different country).

Operational Notes:

This unit has 2 Aux inputs that use the single Aux mode feature (button 5) on the head unit. Please note that the front Aux audio input automatically overrides the rear Aux audio input when connected. When using the front Aux input do not use the rear Aux input.

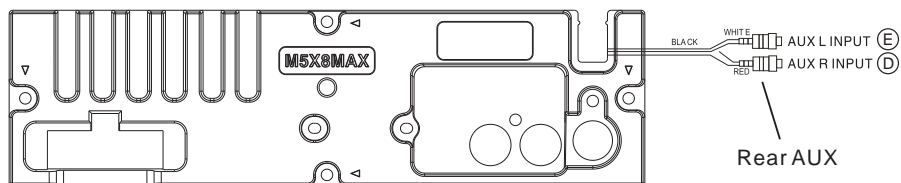
Front AUX Audio input features:

Front 3.5mm stereo socket input on head unit. Ideal for many devices to be connected: including: portable CD players, walkmans, MP3 players, in fact anything that has a headphone or line output



Rear AUX Audio input features:

Fitted with RCA input sockets on the rear of the head unit for allowing a permanent Aux audio device to be connected. Ideal to connect the Aux audio output from a TV or DVD player to this CD player for audio playback through the CD player speaker system.



Discs for playback:

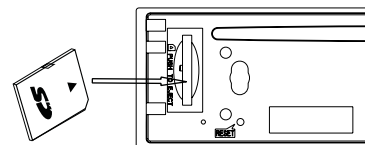
This unit can play disc types: CD/CD -R/-RW.
Compatible with formats: CDDA/MP3/WMA.

Loading and ejecting a disc

1. Turn the power on.
2. Insert the disc with the printed side facing upward into the slot.
3. Press EJECT button to eject the disc.

Multi-media card MMC/SD card slot

Supports MP3/WMA ID3 format music only. Detach the front panel. Carefully insert the SD/MMC card with the label facing towards the left of the unit. Reattach the front panel. Unit starts playback automatically.



USB jack

Carefully insert the USB stick into the USB jack on the front panel. Unit starts playback automatically.

USB/SD/MMC notes:

- USB functions (flash memory type) MP3 music play.
1. SD/ MMC card support.
 2. FAT 12/ FAT 16/ FAT 32 is possible
 - FAT 12/16 (dir: 200 support, file:500 support),
 - FAT 32 (dir: 200 support, file:500 support).
 3. Filename: 32 byte/ Dir name: 32byte.
 4. Tag (id3tag ver2.0)
 - Title/ Artist/ Album: 32 byte support.
 5. Multi card reader not support.
 6. USB 2.0 support.